

COOP ALBERTSLUND DISTRIBUTION CENTRE



ABOUT COOP DANMARK A/S

Coop is Denmark's largest retail company operating the supermarket chains Kvickly, SuperBrugsen, Dagli'Brugsen and coop.dk and the subsidiaries Irma A/S and Fakta A/S.

Coop is also the oldest retail company in Denmark and is owned by its members. In January 2013, Coop joined FDB (the joint association for Danish cooperatives).

Together with its independent cooperatives, Coop Danmark has 1,200 stores, annual sales of DKK 54 billion and approx. 40,000 employees.



www.coop.dk

QUOTES

“Thanks to ProBI, we are now significantly better at allocating staff to our storage facilities according to the load of the day, 4 weeks ahead and over the year. This means that we are able to deliver the desired goods to the stores at the right time – with minimal use of resources.”

LARS ROWLAND BRANDI, PLANNING MANAGER

ABOUT MARK INFORMATION

Mark Information is an innovative software company offering the Workforce Management solution ProMark from offices in Denmark, Sweden, Norway, United Kingdom and Romania.

ProMark enables customers to optimise productivity and generate savings through scheduling the right resources, at the right time, for the right job and ensures that resources are remunerated correctly in the most effective way.

We service global corporations and have more than 1000 installations and 300,000 users.

OPTIMUM CAPACITY MANAGEMENT ENSURES GOODS ON TIME

THE CHALLENGE

- Difficult to get valid data due to unrelated, partially self-invented systems with manual workflows
- Capacity is managed based on historic forecasts and personal experiences up to the day before delivery
- Risk of data and decision errors

PROJECT SCOPE AND SUCCESS CRITERIA

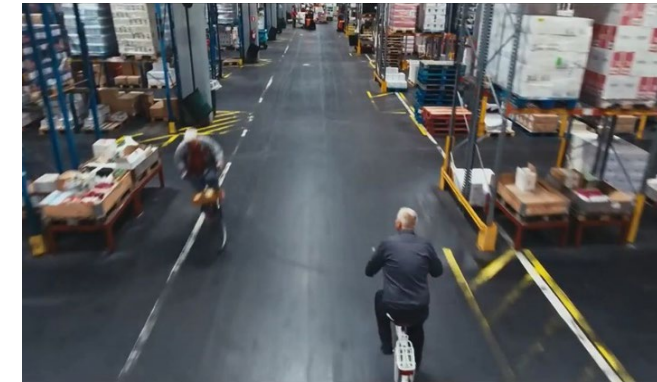
- Consolidation of planning data
- Increased automation so time is spent on making the right decisions, not on obtaining data
- Enhanced ability to react
- Load levelling over the day, week, month and year

KEY METHODS

- ProBI with integration to Analyzer and PowerBI. This combines ProMark data cubes with other cubes for daily follow-up as well as long-term planning
- In addition, Coop uses ProTime for T&A registration with integration to payroll and ProRoster for staff roster planning
- Registration via portal and terminals

OUTCOMES

- Real-time data and thus, a fact-based basis for decision-making
- Better balance between capacity and workload in the medium and long term
- Better utilization of employees' working hours through efficient staff roster planning
- Reduction of non-activity-based hours
- Central planning



PRIMARY RESULTS

- Fast and flexible planning and replanning through continuous monitoring and simulation
- Less overtime among warehouse workers and fewer standby calls
- Saved time on scheduling